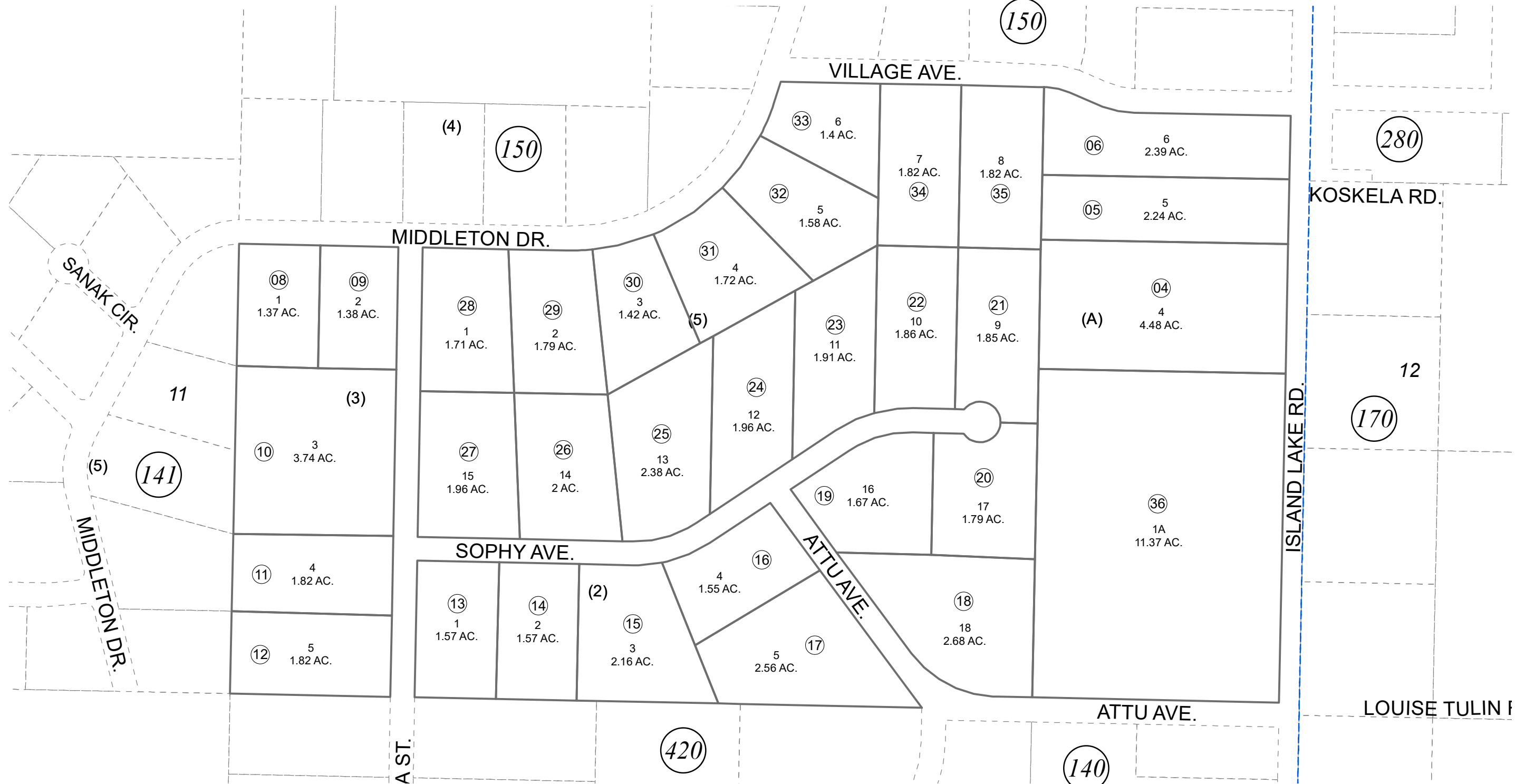
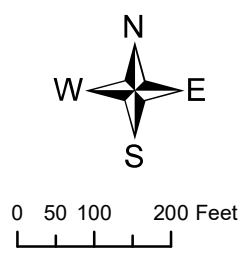


S 1/2 NE 1/4 SEC. 11, T07N, R12W, S.M.

012-160



NOVEMBER 3, 2021



For 2022 assessment roll		
Delete	Add	Revise
To		
01-03	36	

Assessor's Map  
Kenai Peninsula Borough

NIKISKI VILLAGE SUB KN0001585  
NIKISKI VILLAGE SUB STRONG REPLAT KN2021063

Note- Assessor's block Numbers Shown in Ellipses  
Assessor's Parcel Numbers Shown in Circles

This map is prepared for Kenai Peninsula Borough Assessing Dept. use only and is not intended for conveyance nor is it a survey.