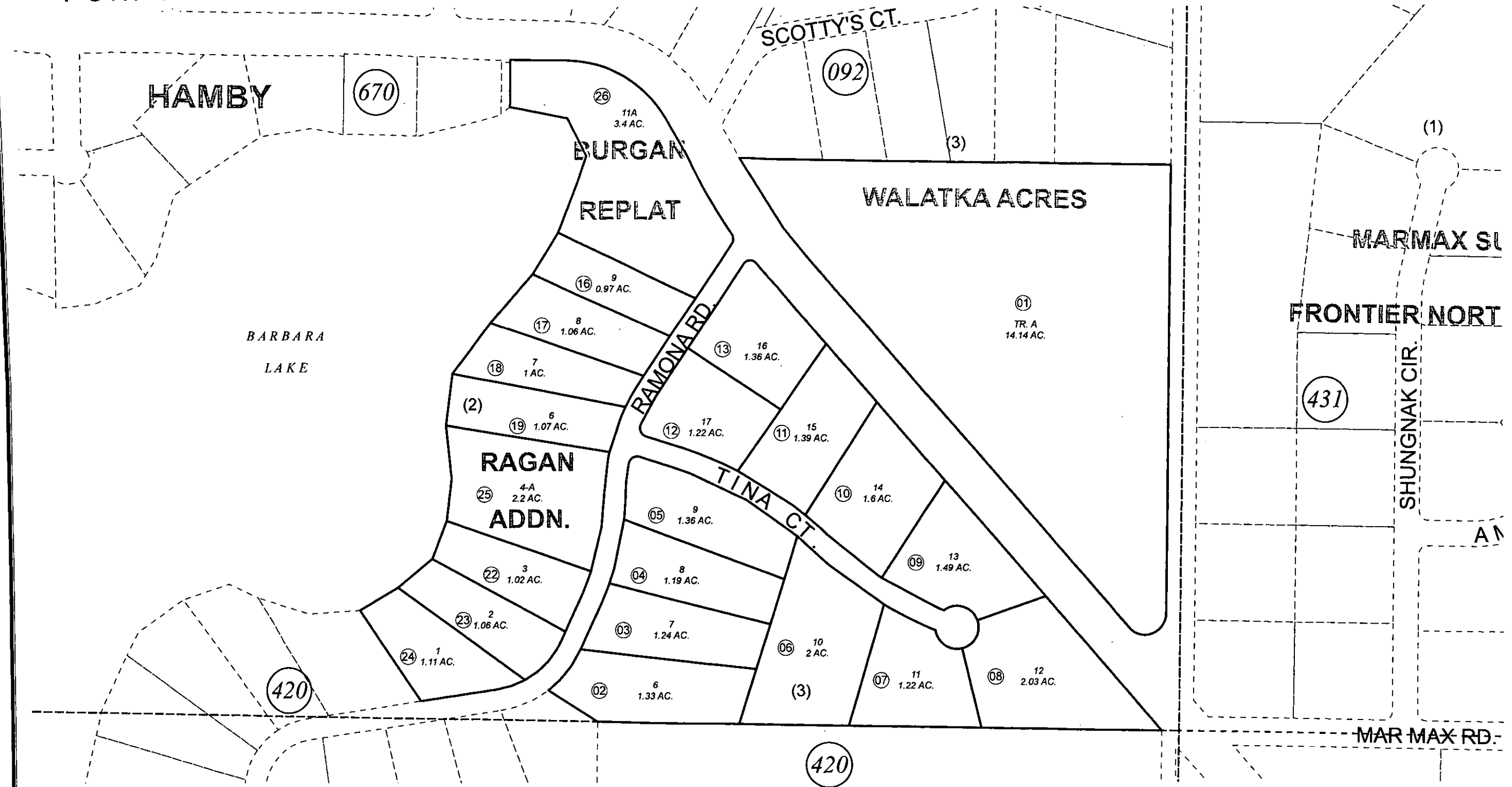


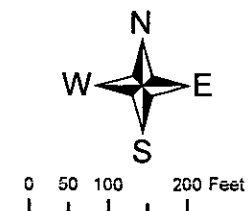
POR. S1/2 SE1/4, SEC. 3, T07N, R11W, S.M.

013-430



JULY 19, 2011

For 2012 assessment roll		
Delete	Add	Revise
	To	
14,15	26	



Assessor's Map
Kenai Peninsula Borough

LAKECREST SUB KN0780154
 WALATKA ACRES SUB KN0840081
 LAKECREST SUB KN0870154
 LAKECREST RAGAN ADDN KN2008117
 LAKECREST SUB BURGAN REPLAT KN2011032

This map is prepared for Kenai Peninsula Borough Assessing Dept. use only and is not intended for conveyance nor is it a survey.
 Note- Assessor's block Numbers Shown in Elipses
 Assessor's Parcel Numbers Shown in Circles