

S1/2 SEC. 32, T03S, R14W, S.M.

159-290

200

LEM RD.

SPERN RD.

280

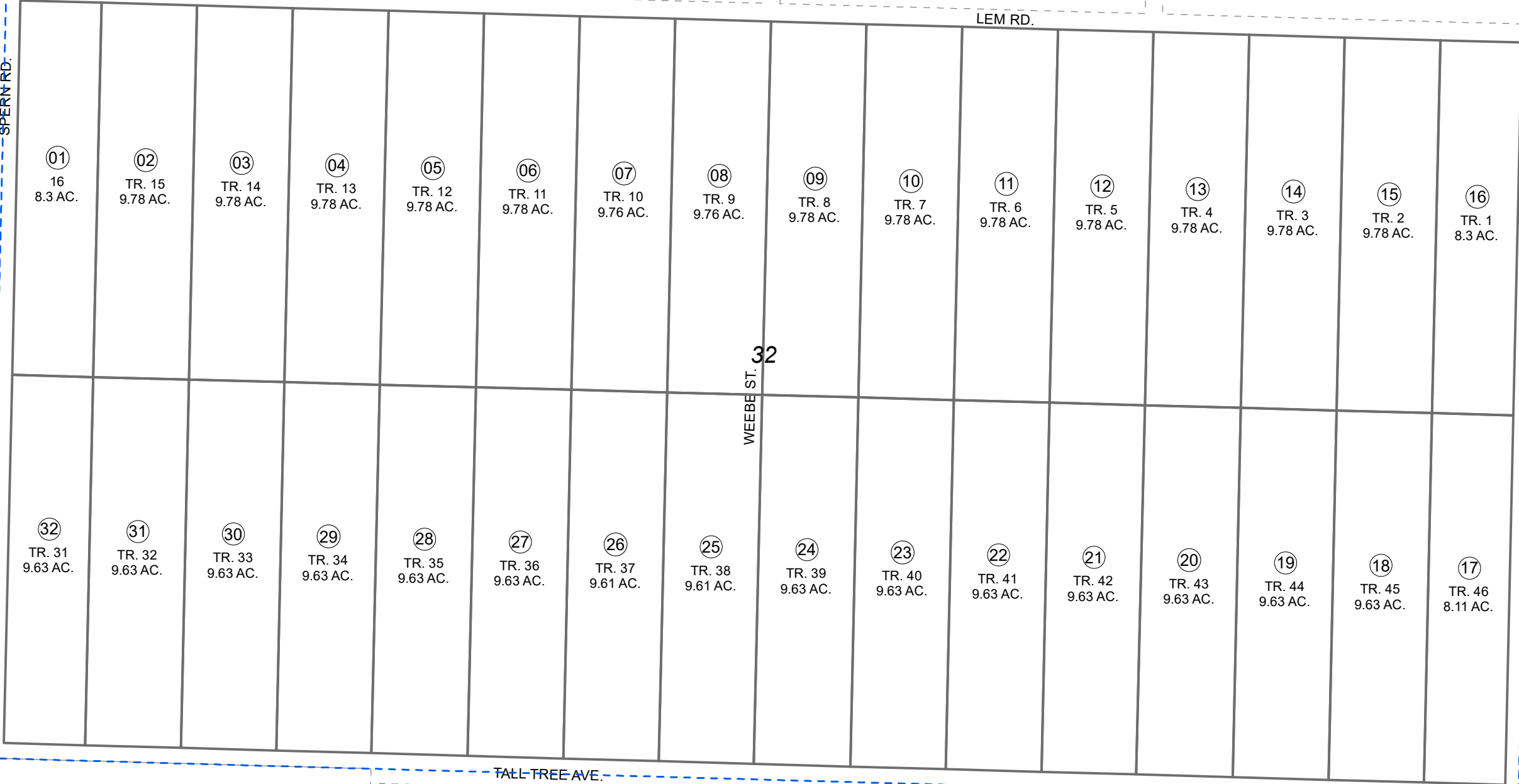
31

200

33

WEEBE ST.

NOT SO FAR ST.



01  
16  
8.3 AC.

02  
TR. 15  
9.78 AC.

03  
TR. 14  
9.78 AC.

04  
TR. 13  
9.78 AC.

05  
TR. 12  
9.78 AC.

06  
TR. 11  
9.78 AC.

07  
TR. 10  
9.76 AC.

08  
TR. 9  
9.76 AC.

09  
TR. 8  
9.78 AC.

10  
TR. 7  
9.78 AC.

11  
TR. 6  
9.78 AC.

12  
TR. 5  
9.78 AC.

13  
TR. 4  
9.78 AC.

14  
TR. 3  
9.78 AC.

15  
TR. 2  
9.78 AC.

16  
TR. 1  
8.3 AC.

32  
TR. 31  
9.63 AC.

31  
TR. 32  
9.63 AC.

30  
TR. 33  
9.63 AC.

29  
TR. 34  
9.63 AC.

28  
TR. 35  
9.63 AC.

27  
TR. 36  
9.63 AC.

26  
TR. 37  
9.61 AC.

25  
TR. 38  
9.61 AC.

24  
TR. 39  
9.63 AC.

23  
TR. 40  
9.63 AC.

22  
TR. 41  
9.63 AC.

21  
TR. 42  
9.63 AC.

20  
TR. 43  
9.63 AC.

19  
TR. 44  
9.63 AC.

18  
TR. 45  
9.63 AC.

17  
TR. 46  
8.11 AC.

TALL TREE AVE.

TAL

6

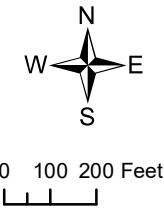
BK  
165

5

4

DECEMBER 6, 2023

For 2024 assessment roll		
Delete	Add	Revise
To		07,08, 25,26
(REVISE ACREAGE)		



Assessor's Map  
Kenai Peninsula Borough

HARBOR HEIGHTS ALASKA SUB HM0670551  
RECORD OF SURVEY LOT 5 BLK 1 HM2022015

Note- Assessor's block Numbers Shown in Elipses  
Assessor's Parcel Numbers Shown in Circles

This map is prepared  
for Kenai Peninsula  
Borough Assessing Dept.  
use only and is not  
intended for conveyance  
nor is it a survey.