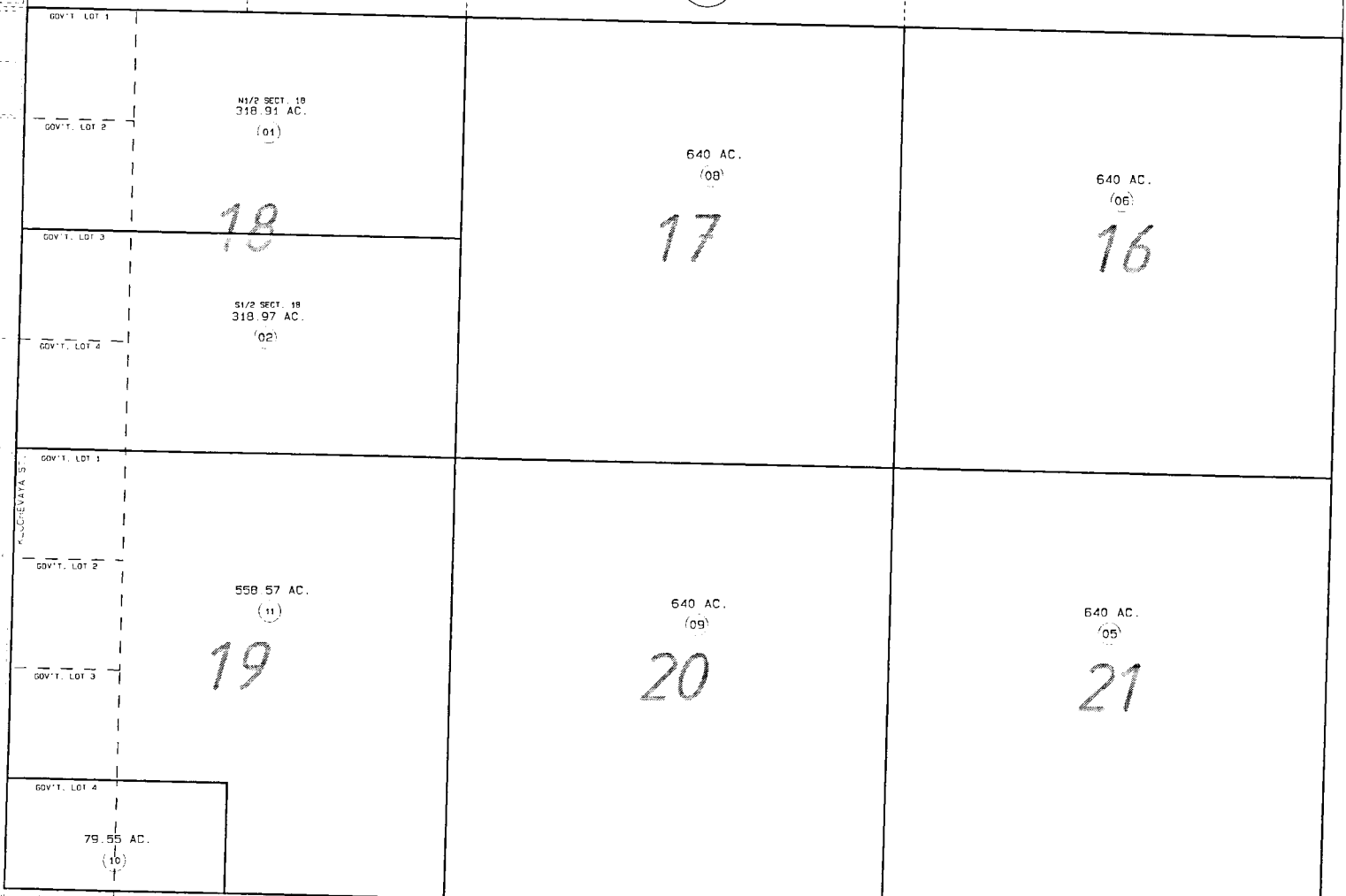


SEC. 16 - 21, T4S, R13W, (04)

SEWARD MERIDIAN

165-120



(11)

(13)

(21)

DAVID
EVAHST
NOV. 1, 1995
FOR 96 ASSESSMENT ROLL
DELETE ADD REVISED
TO
4 10.11

Assessor's Map
Kenai Peninsula Borough

PLAT WAIVER RESOLUTION 95-15 HM951700PW

THIS MAP IS PREPARED FOR KENAI PENINSULA BOROUGH ASSESSING DEPT. USE ONLY AND IS NOT INTENDED FOR ANY OTHER USE OR REPRESENTATION

NOTE - Assessor's Block Numbers Shown in Ellipses
Assessor's Parcel Numbers Shown in Circles