

SEC. 28 - 33, T4S, R13W,

(12)

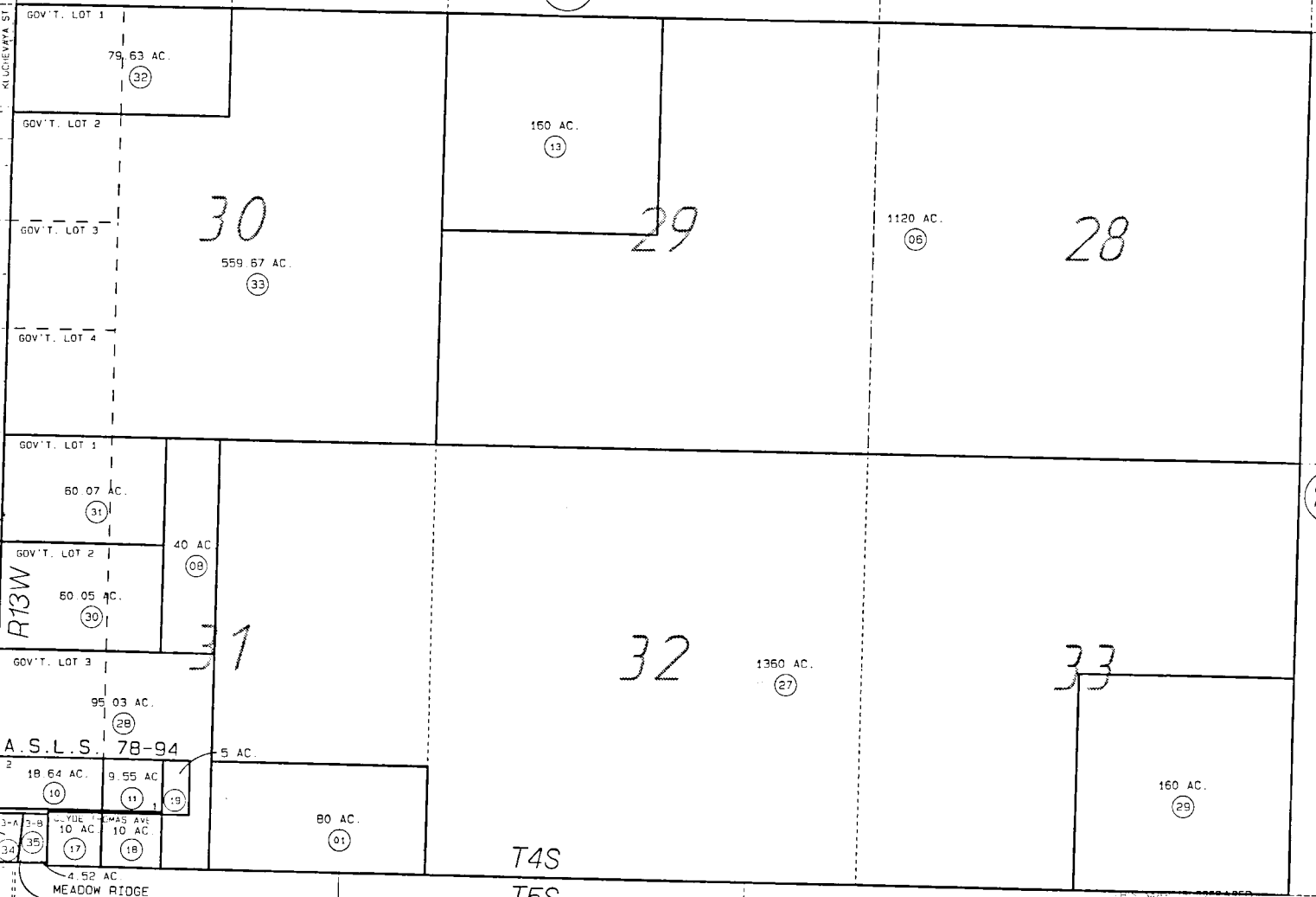
SEWARD MERIDIAN

165-210

(20)

(22)

R14W  
R13W



DATE: SEPT 26, 1997  
FOR 19 98 ASSESSMENT ROLL

DELETE	ADD	REVISED
	TO	
09	34,35	

Assessor's Map  
Kenai Peninsula Borough

BK  
171

ALASKA STATE LAND SURVEY 78-094 HM790007  
PLAT WAIVER RESOLUTION 95-15 HM951700PW  
MEADOW RIDGE HM970046

NOTE - Assessor's Block Numbers Shown In Ellipses  
Assessor's Parcel Numbers Shown In Circles

THIS MAP IS THE PROPERTY OF THE BOROUGH OF KENAI PENINSULA BOROUGH ASSESSING DEPT. USE ONLY AND IS NOT INTENDED FOR ANY OTHER USE OR REPRESENTATION

