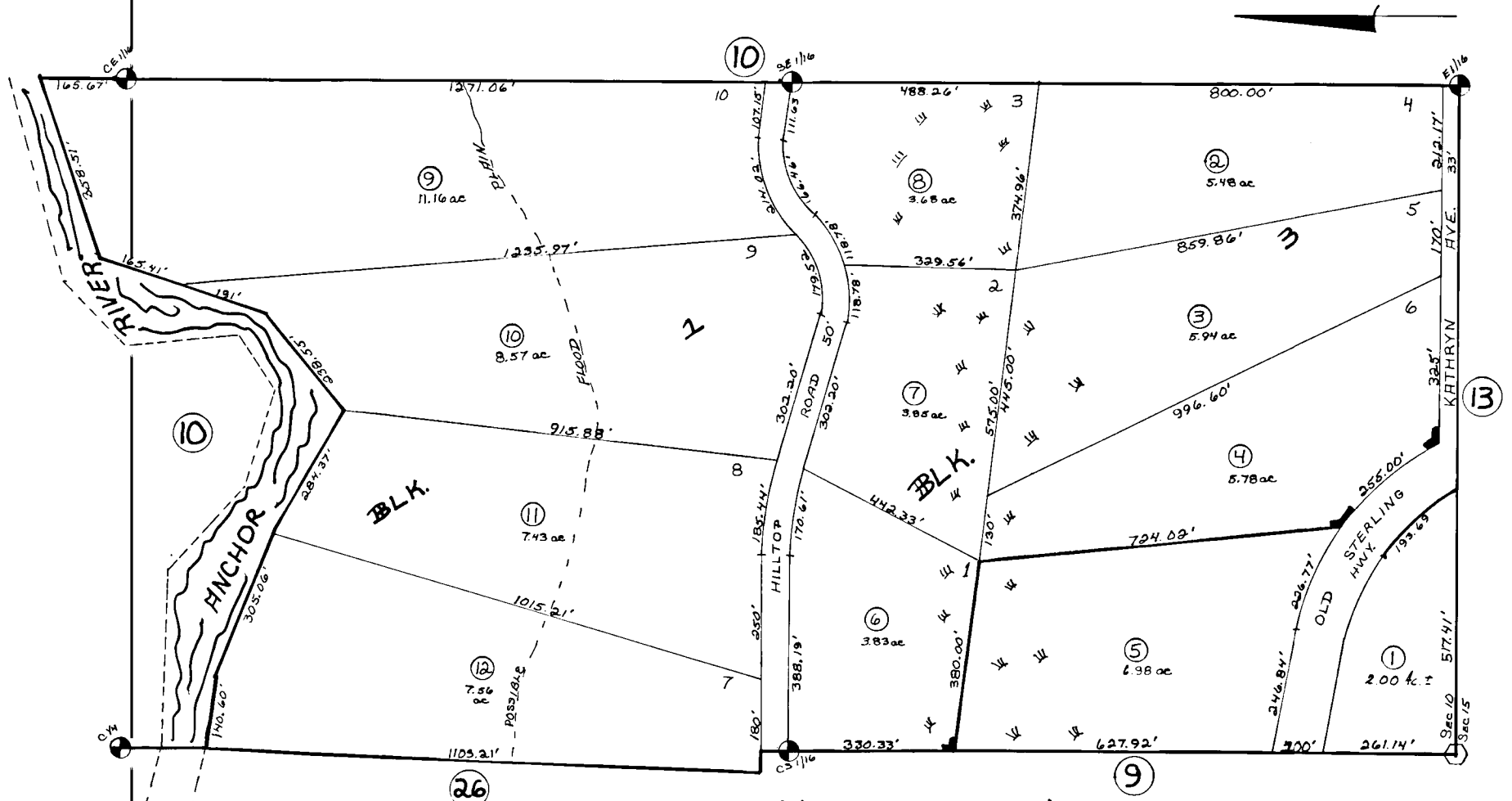


POR. W1/2 SE1/4 & POR. SW1/4 NE1/4, SEC. 10, T.5S, R.15W, S.M. 169-27



NORWEGIAN WOODS

H-78-91

Assessor's Map
Kenai Peninsula Borough, Alaska

NOTE - Assessor's Block Numbers Shown in Ellipses
Assessor's Parcel Numbers Shown in Circles