

30

SKYVIEW SUBD.

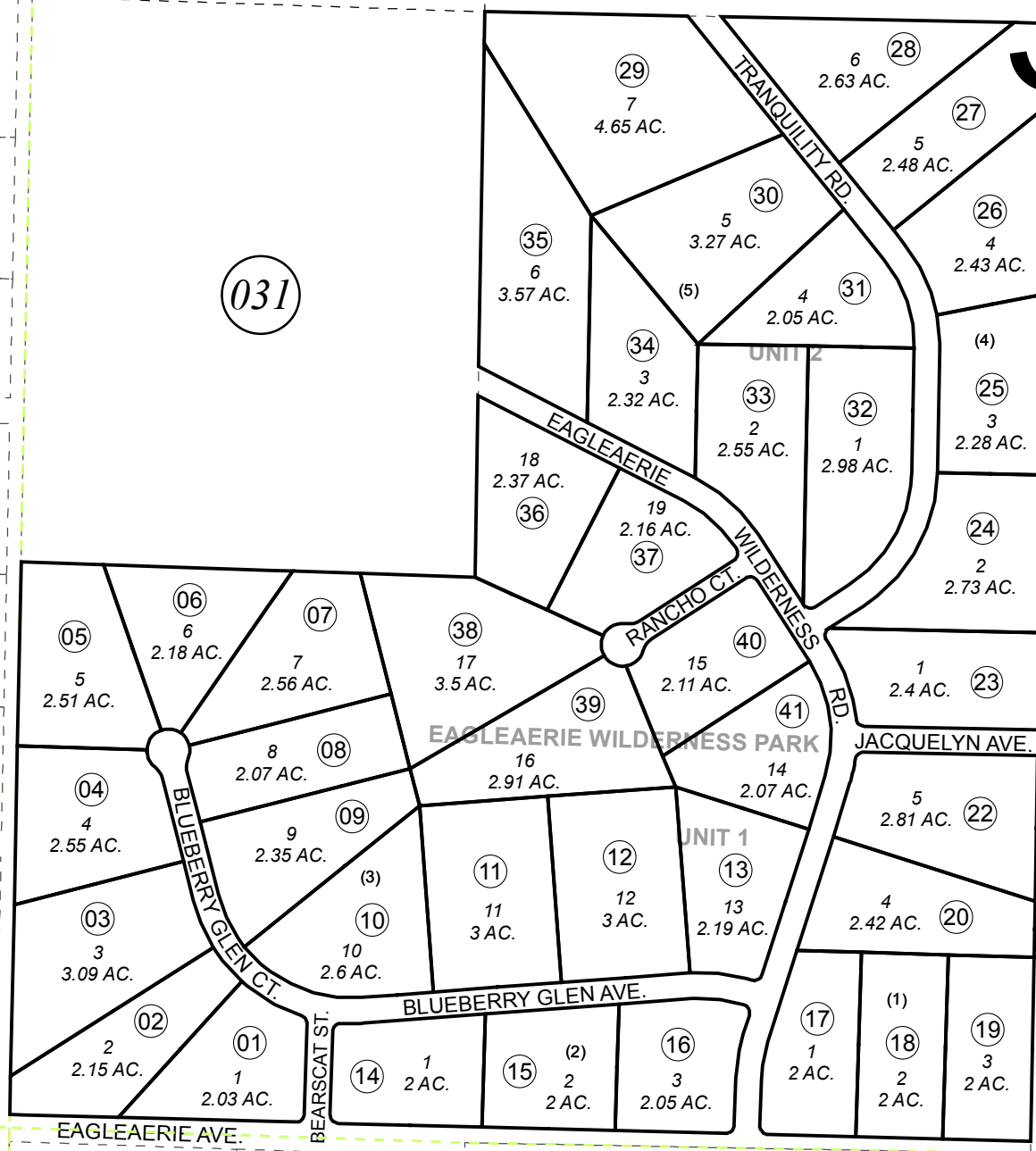
MAHALO LN.

TRUE STEFAN TRL.

031

REA-JAY TWO SUBD.  
REA DR.  
REA-JAY SUBD.  
REA-JAY SUBD. REPLAT 2005  
PTARMIGAN ACRES SUBD. NO. 4  
PTARMIGAN ACRES NO. 5 2012 REPLAT  
HOLYOLOCT.  
COCONUT AVE.  
PTARMIGAN ACRES SUBD.  
PTARMIGAN ACRES TRACT 3 EAGLEAERIE ESTATES  
EAGLEAERIE AVE.

BK 171



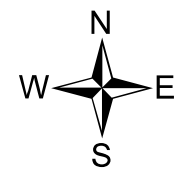
031

PLAT WAIVER RESOLUTION 97-36

031

JUNE 14, 2018

For 2019 assessment roll		
Delete	Add	Revise
To		16
(ACREAGE CHANGE)		



0 100 200 400 Feet

Assessor's Map  
Kenai Peninsula Borough

EAGLEAERIE WILDERNESS PARK UNIT 1 HM0990013  
EAGLEAERIE WILDERNESS PARK UNIT 2 HM0000003  
RECORD OF SURVEY HM2010005  
RECORD OF SURVEY HM2018015

This map is prepared for Kenai Peninsula Borough Assessing Dept. use only and is not intended for conveyance nor is it a survey.

Note- Assessor's block Numbers Shown in Ellipses  
Assessor's Parcel Numbers Shown in Circles