

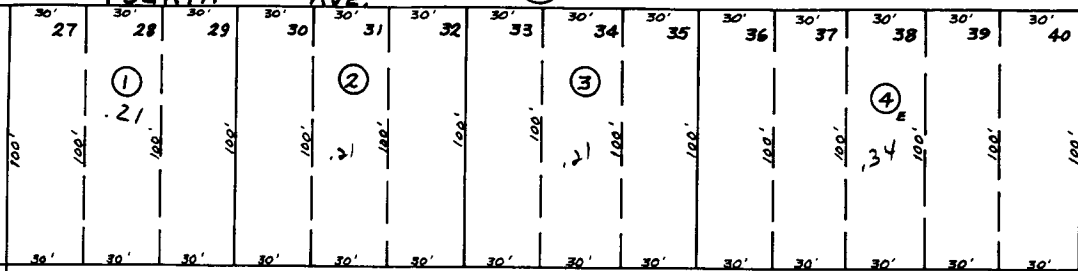
PTN. SEC. 3, T15, R1W, S. M.

147-29

(26)

FOURTH AVE.

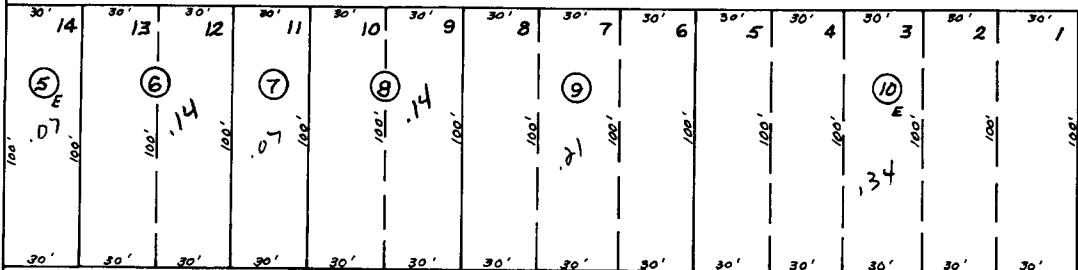
(25)



ALLEY

BLOCK 6

**RAILROAD
TERMINAL
RESERVE**

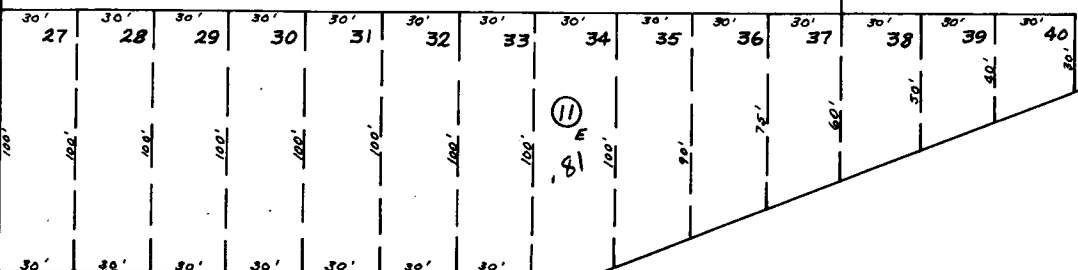


VAN BUREN

(30)



FIFTH



ALLEY

BLOCK 7

**LAUBNER
ADDITION**

Assessor's Map
Kenai Peninsula Borough, Alaska

NOTE - Assessor's Block Numbers Shown in Ellipses
Assessor's Parcel Numbers Shown in Circles