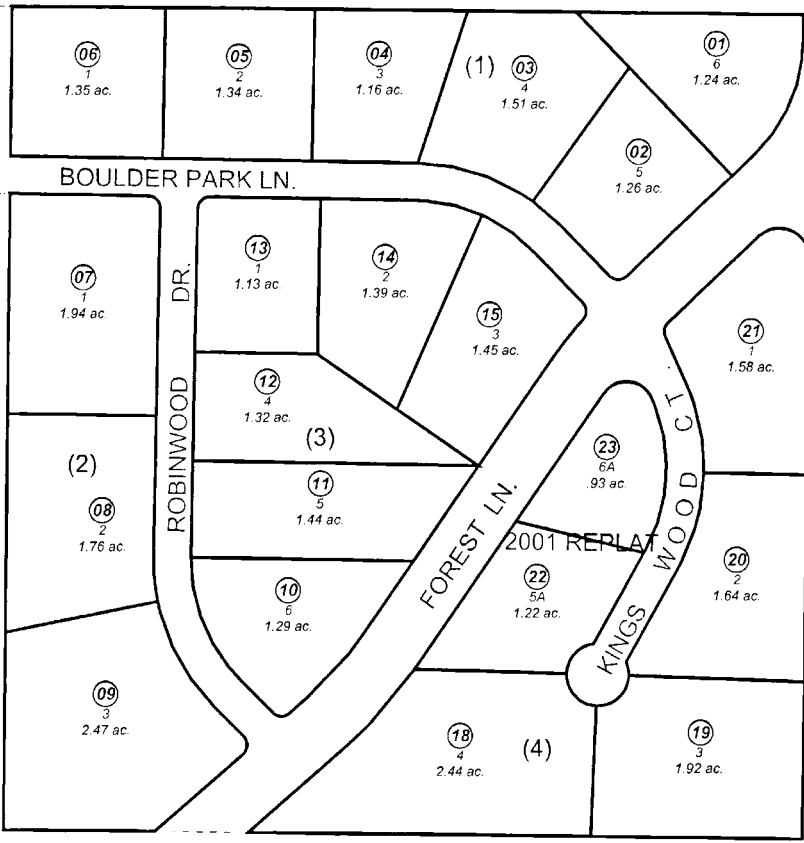


TC

040

SHISHMAREF DR.



JEFF FOSTER
PROPERTY TR B

SHADOW ROCK ESTATES

040

BK
063

R
R A

LOPEZ AVE.

040

DECEMBER 6, 2001

For 2001 assessment roll		
Delete	Add	Reverse
	To	
16,17	22,23	

SHADOW ROCK ESTATES KN7800049
SHADOW ROCK ESTATES 2001 REPLAT KN2001063

Assessor's Map
Kenai Peninsula Borough



This map is prepared for Kenai Peninsula Borough Assessing Dept. use only and is not intended for conveyance nor is it a survey.

Note- Assessor's block Numbers Shown in Ellipses
Assessor's Parcel Numbers Shown in Circles