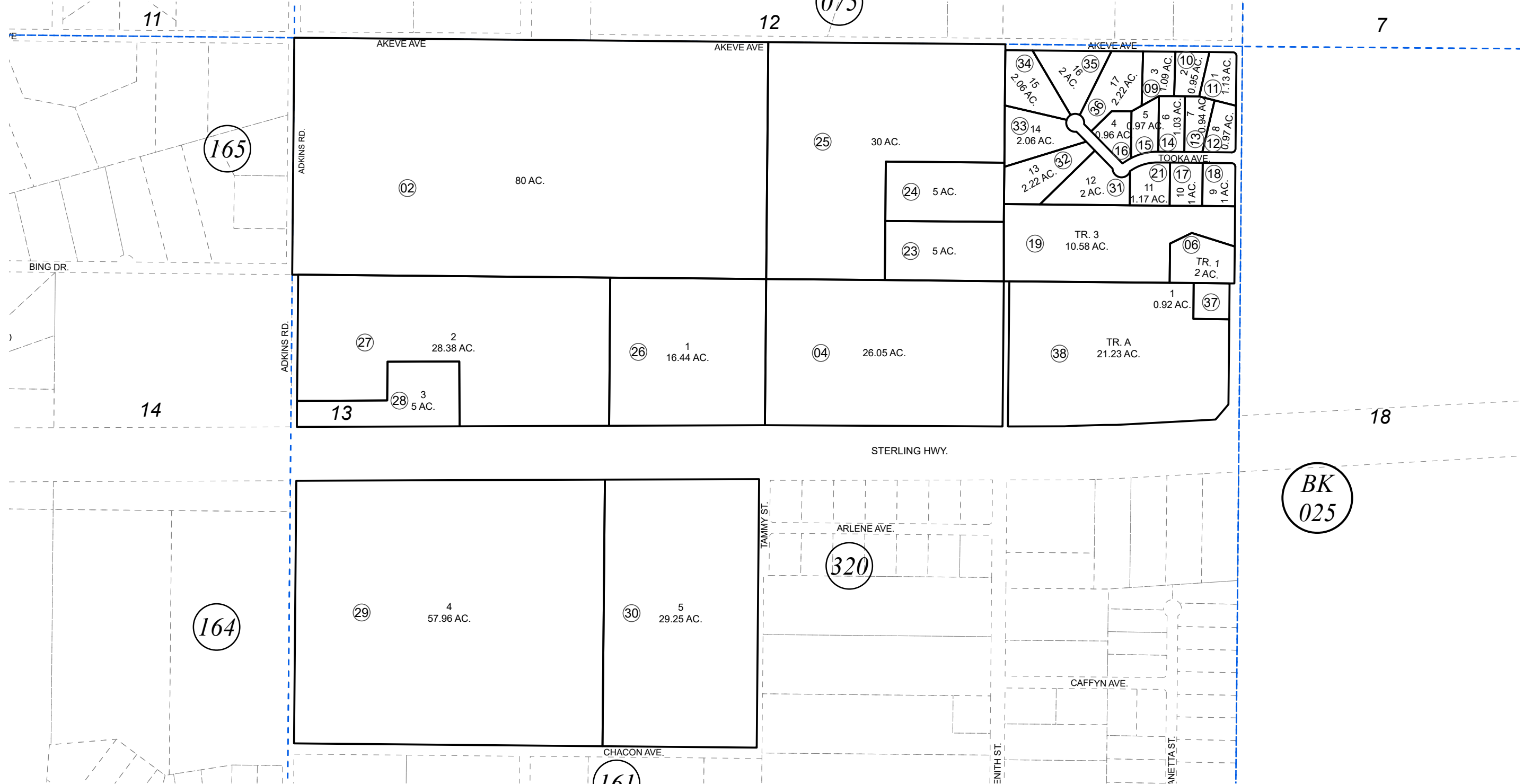


N1/2 SEC. 13, T05N, R08W, S.M.

065-322



JUNE 25, 2022



0 150 300 600 Feet

For 2023 assessment roll		
Delete	Add	Revise
To		
05	37,38	

Assessor's Map
Kenai Peninsula Borough

CON-JON KN0850077
 CON-JON 1986 SUB OF TRACT 2 KN0860234
 CON-JON 1994 KN0940065
 CON-JON 1995 KN0950021
 EL RANCHO COSTA PLENTE KN0990057
 CON-JON FAIPEAS REPLAT AMENDED KN2002006
 THE STORDAHLE SUB KN2022016

This map is prepared for Kenai Peninsula Borough Assessing Dept. use only and is not intended for conveyance nor is it a survey.
 Note- Assessor's block Numbers Shown in Ellipses
 Assessor's Parcel Numbers Shown in Circles