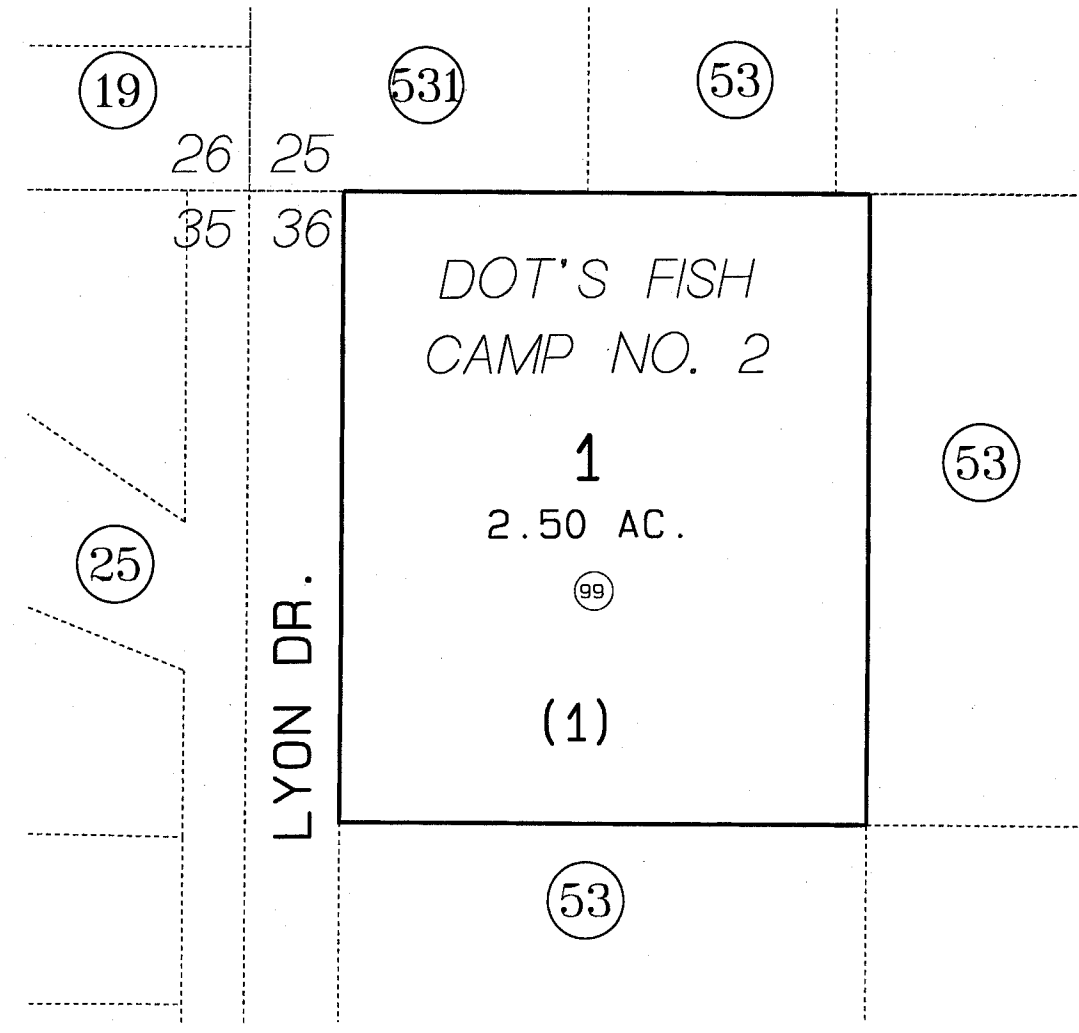


DOT'S FISH CAMP NO. 2, T5N, R8W, SEC. 36, S.M.

065-532

- 01 SPACE 01
- 02 SPACE 02
- 03 SPACE 03
- 04 SPACE 04
- 05 SPACE 05
- 06 SPACE 06
- 07 SPACE 07
- 08 SPACE 08
- 09 SPACE 09



DATE: FEB. 2, 2000
 FOR 2000 ASSESSMENT ROLL
 DELETE ADD REVISED
 TO
 NEW
 PAGE

Assessor's Map
 Kenai Peninsula Borough

KN790083 STEPHENKIE ALASKA SUB LOT 1 BLOCK 1

THIS MAP IS PREPARED FOR KENAI PENINSULA BOROUGH ASSESSING DEPT. USE ONLY AND IS NOT INTENDED FOR CONVEYANCE, NOR IS IT A SURVEY
 NOTE - Assessor's Block Numbers Shown In Ellipses Assessor's Parcel Numbers Shown In Circles