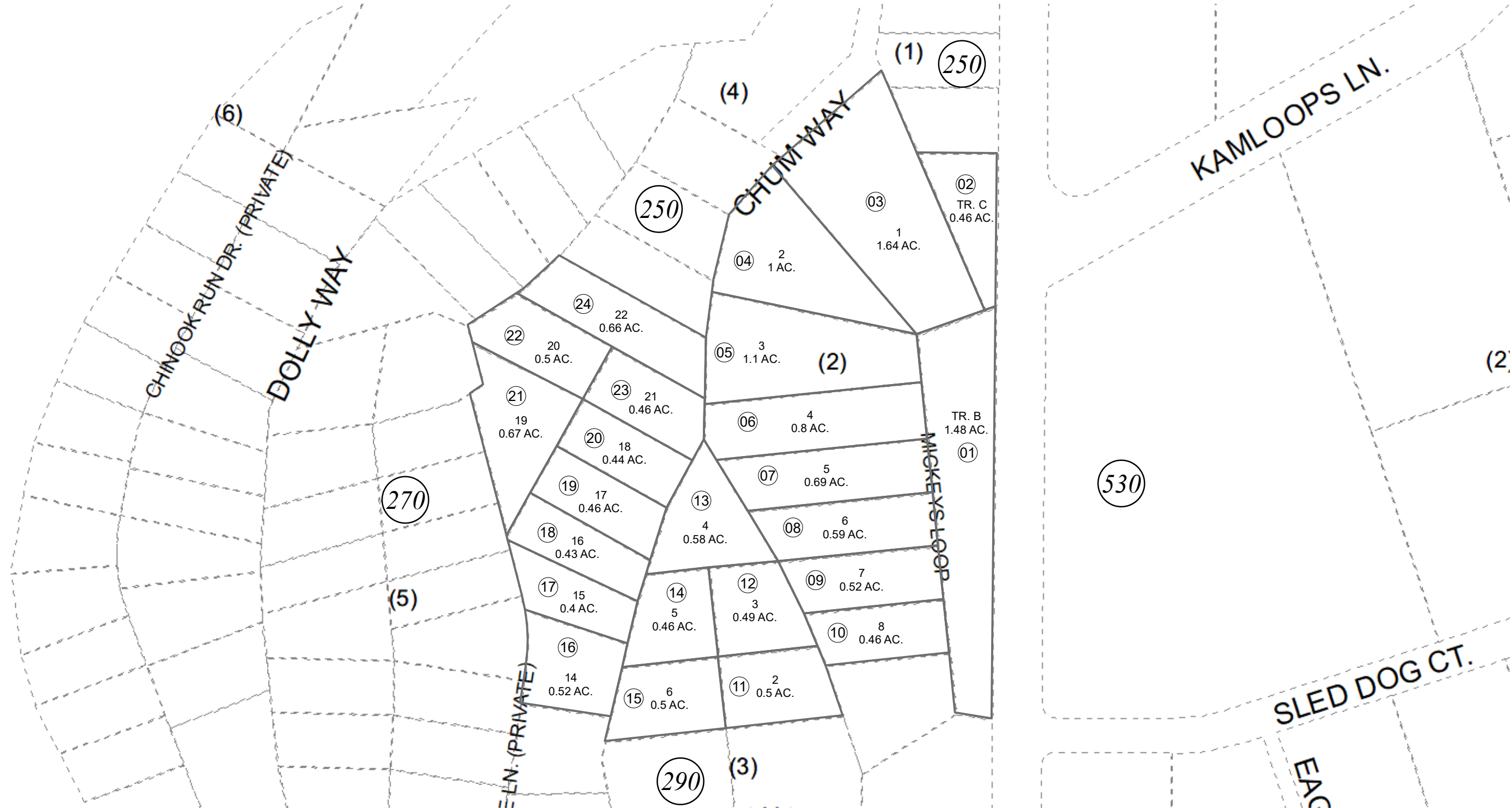
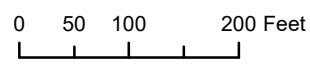
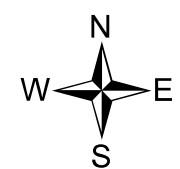


POR. SEC. 35, T05N, R08W, S.M.

065-260



JULY 13, 2021



For 2022 assessment roll		
Delete	Add	Revise
To		01-24
		(ACREAGE REVISION)

Assessor's Map
Kenai Peninsula Borough

KENAI RIVER KEYS SUB KN0720062
KENAI RIVER KEYS SUB AMENDED KN0920044

This map is prepared for Kenai Peninsula Borough Assessing Dept. use only and is not intended for conveyance nor is it a survey.
Note- Assessor's block Numbers Shown in Ellipses
Assessor's Parcel Numbers Shown in Circles