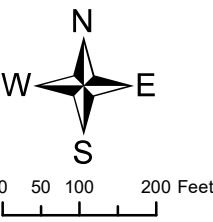
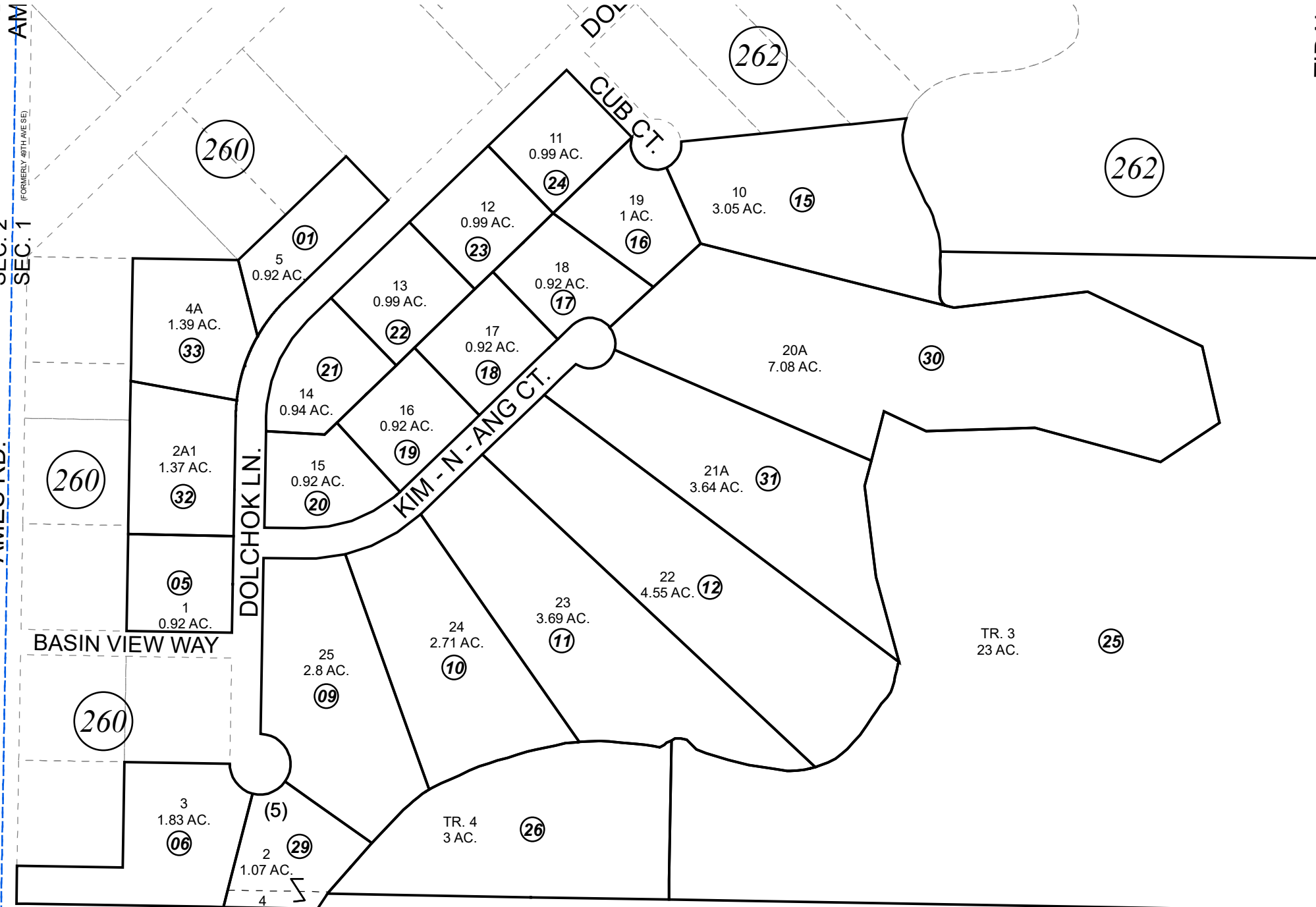


POR, SEC. 1, T05N, R11W, S.M.

049-261



JUNE 4, 2019

For 2020 assessment roll		
Delete	Add	Revise
	To	
02,27,28	32,33	

Assessor's Map
Kenai Peninsula Borough

KN0830103 DOLCHOK-KENAI SUB
 KN0850019 BASIN VIEW SUB PART 3
 KN0900025 BASIN VIEW SUB PART 4
 KN2019018 BASIN VIEW SUB PETTEY-DANIEL REPLAT

This map is prepared for Kenai Peninsula Borough Assessing Dept. use only and is not intended for conveyance nor is it a survey.
 Note- Assessor's block Numbers Shown in Ellipses
 Assessor's Parcel Numbers Shown in Circles