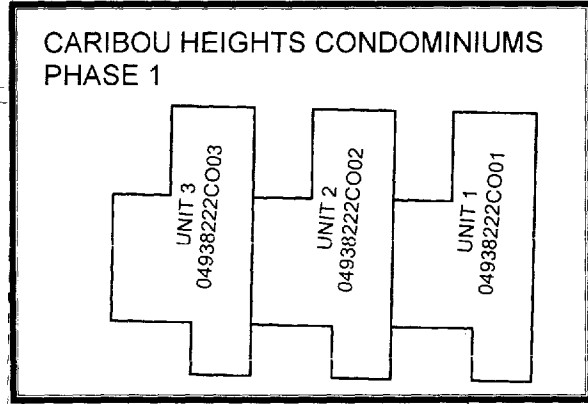
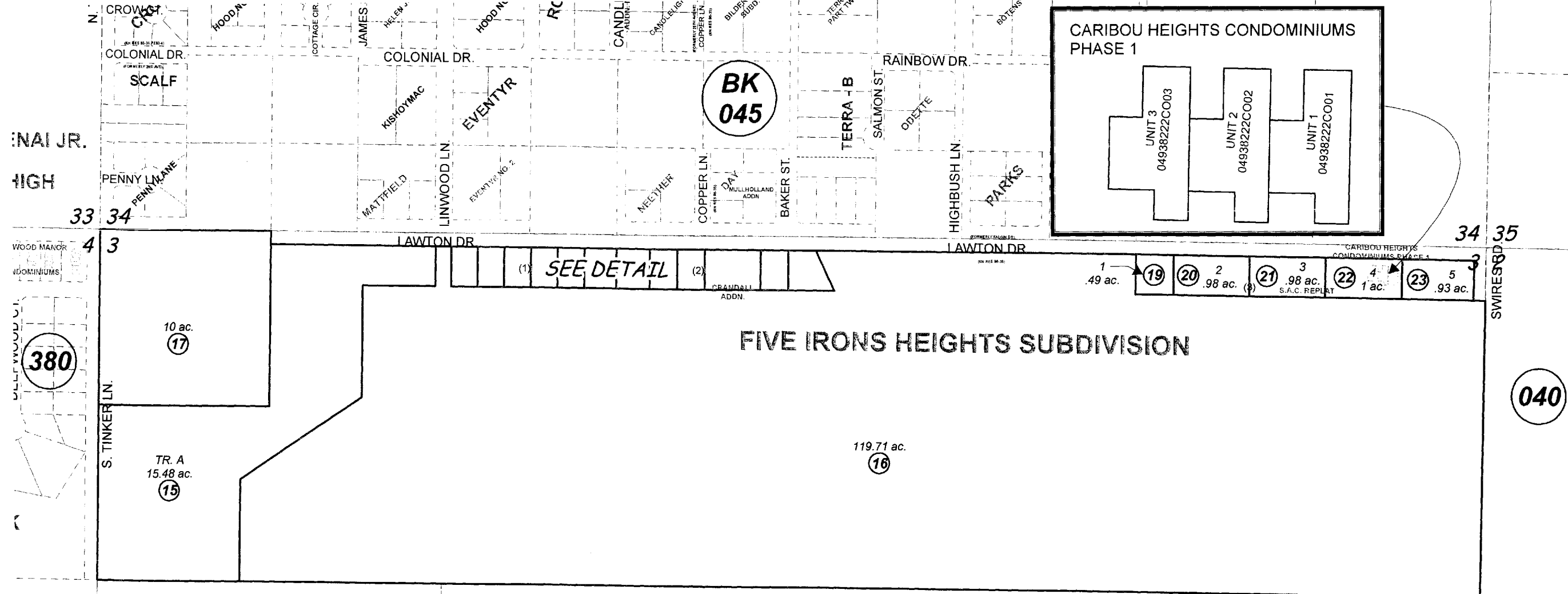


POR. GOV'T. LOTS 1-4 SEC. 3, T05N, R11W, S.M.

049-382



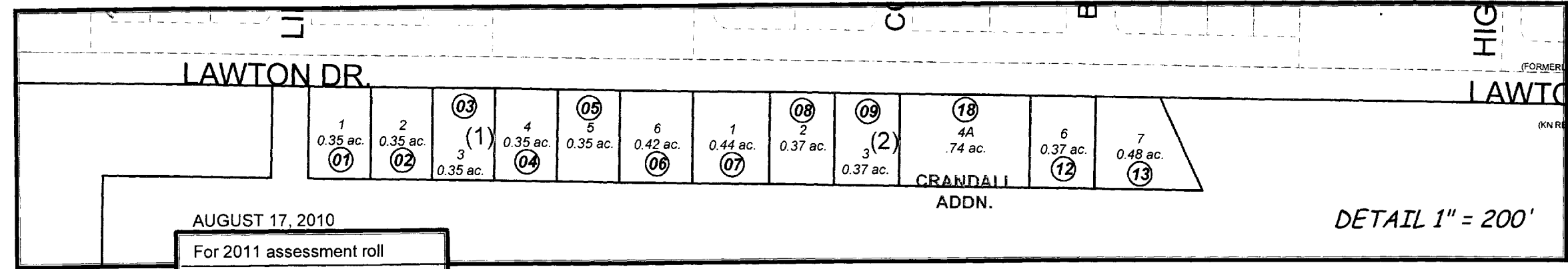
BK 045



SEE DETAIL

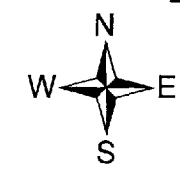
FIVE IRONS HEIGHTS SUBDIVISION

010



AUGUST 17, 2010

For 2011 assessment roll		
Delete	Add	Revise
To		22
	(ADDED CONDOMINIUM REFERENCE)	



Assessor's Map
Kenai Peninsula Borough

FIVE IRONS HEIGHTS SUB KN0970105
 FIVE IRONS HEIGHTS SUB CRANDALL ADDN KN2003023
 FIVE IRONS HEIGHTS SUB S.A.C. REPLAT KN2008064
 CARIBOU HEIGHTS CONDOMINIUMS PHASE I UNITS 1-3 KN2008085

DETAIL 1" = 200'

This map is prepared for Kenai Peninsula Borough Assessing Dept. use only and is not intended for conveyance nor is it a survey.

Note- Assessor's block Numbers Shown in Elipses
 Assessor's Parcel Numbers Shown in Circles