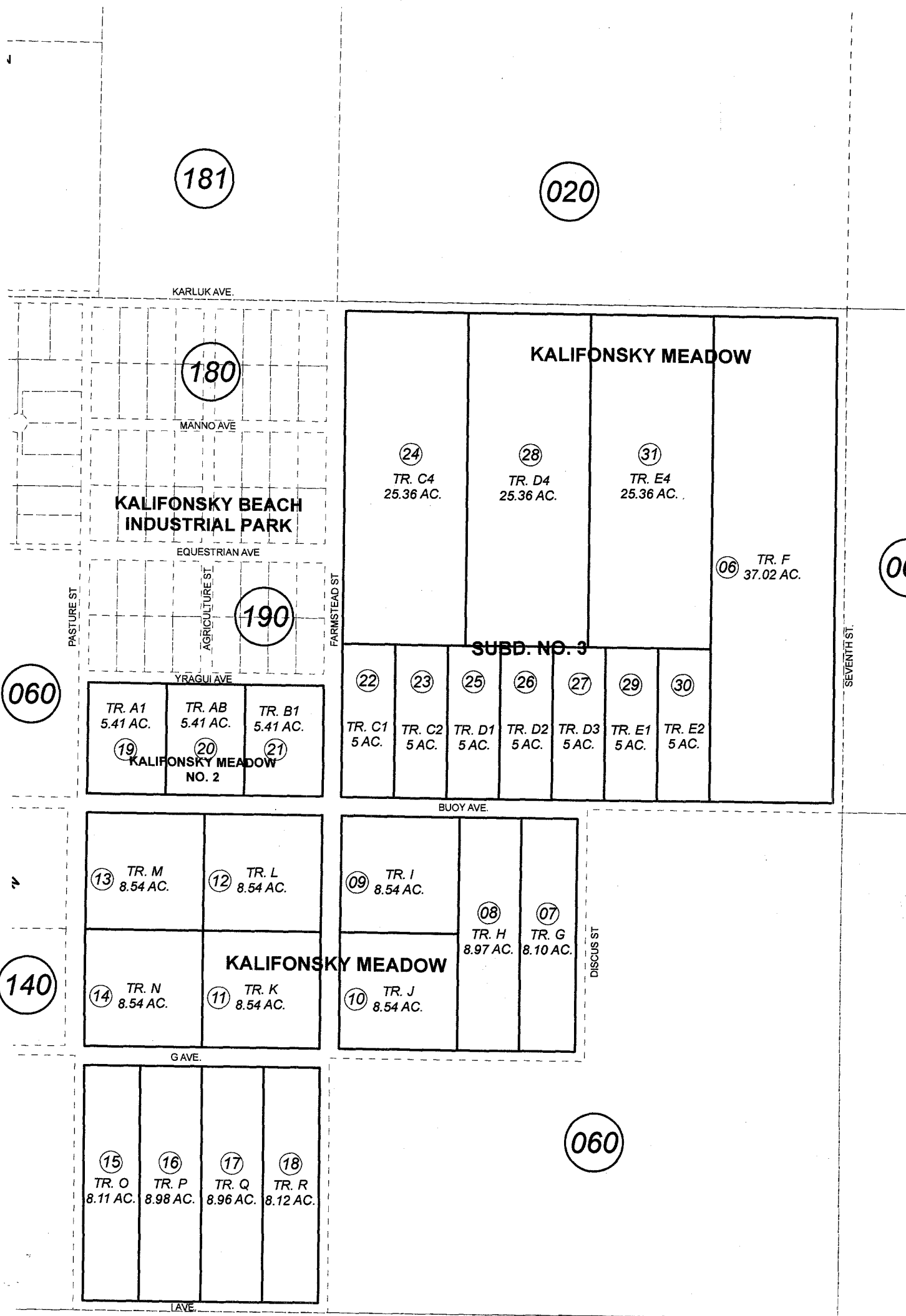


055-241

POR. SEC. 29, T05N, R11W, S.M.



060

140

181

020

180

190

060

060

060



JUNE 16, 2008

For 2009 assessment roll	
Delete	
Add	
Revise	
To	3-5 22-31

This map is prepared for Kenai Peninsula Borough Assessing Dept. use only and is not intended for conveyance nor is it a survey.

Note- Assessor's block Numbers Shown in Ellipses  
Assessor's Parcel Numbers Shown in Circles

KALIFONSKY MEADOW SUB KN2005043  
KALIFONSKY MEADOW SUB NO 2 KN2007076  
KALIFONSKY MEADOW SUB NO 3 KN2008009

Assessor's Map  
Kenai Peninsula Borough