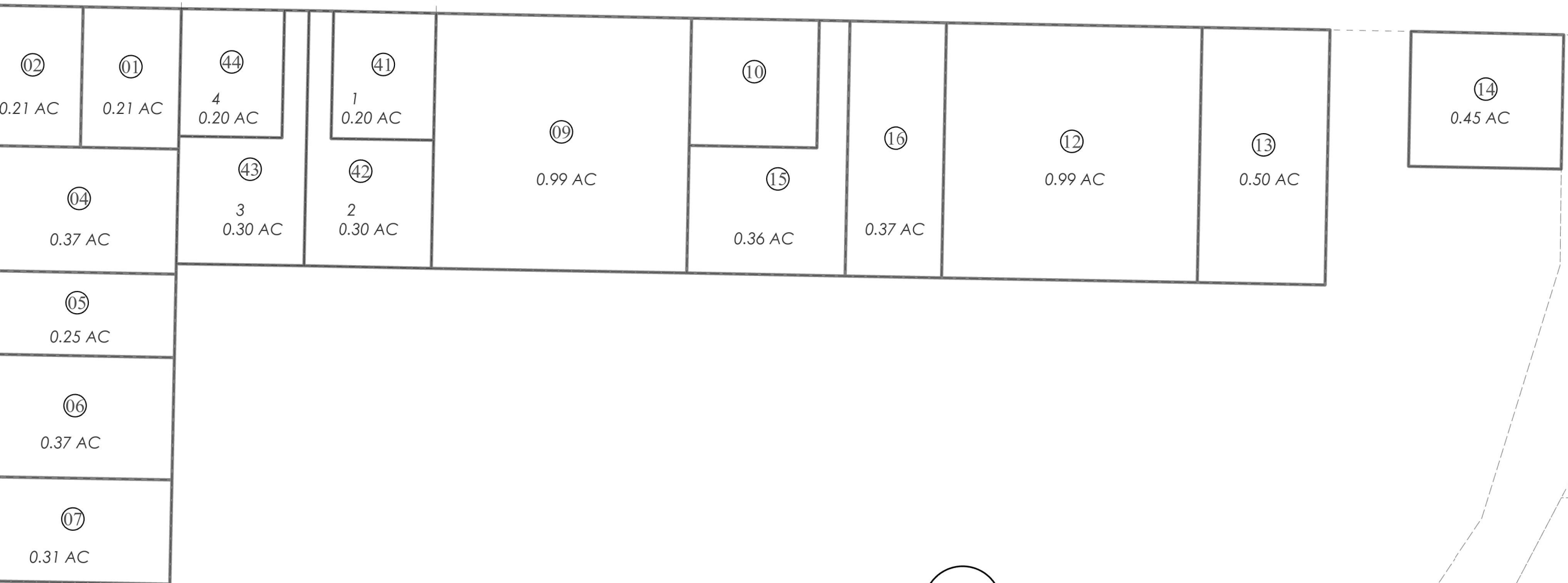


POR. SEC. 4, T05N, R11W, S.M.

049-020

010

010



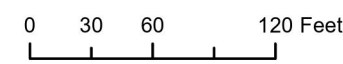
32  
5  
33  
4  
5 WALKER LN

LAWTON DR

030

JUNE 07, 2024

For 2025 assessment roll		
Delete	Add	Revise
To		
08	41-44	



Assessor's Map  
Kenai Peninsula Borough

REUTOV SUB KN2024018

This map is prepared for Kenai Peninsula Borough Assessing Dept. use only and is not intended for conveyance nor is it a survey.

Note- Assessor's block Numbers Shown in Elipses  
Assessor's Parcel Numbers Shown in Circles