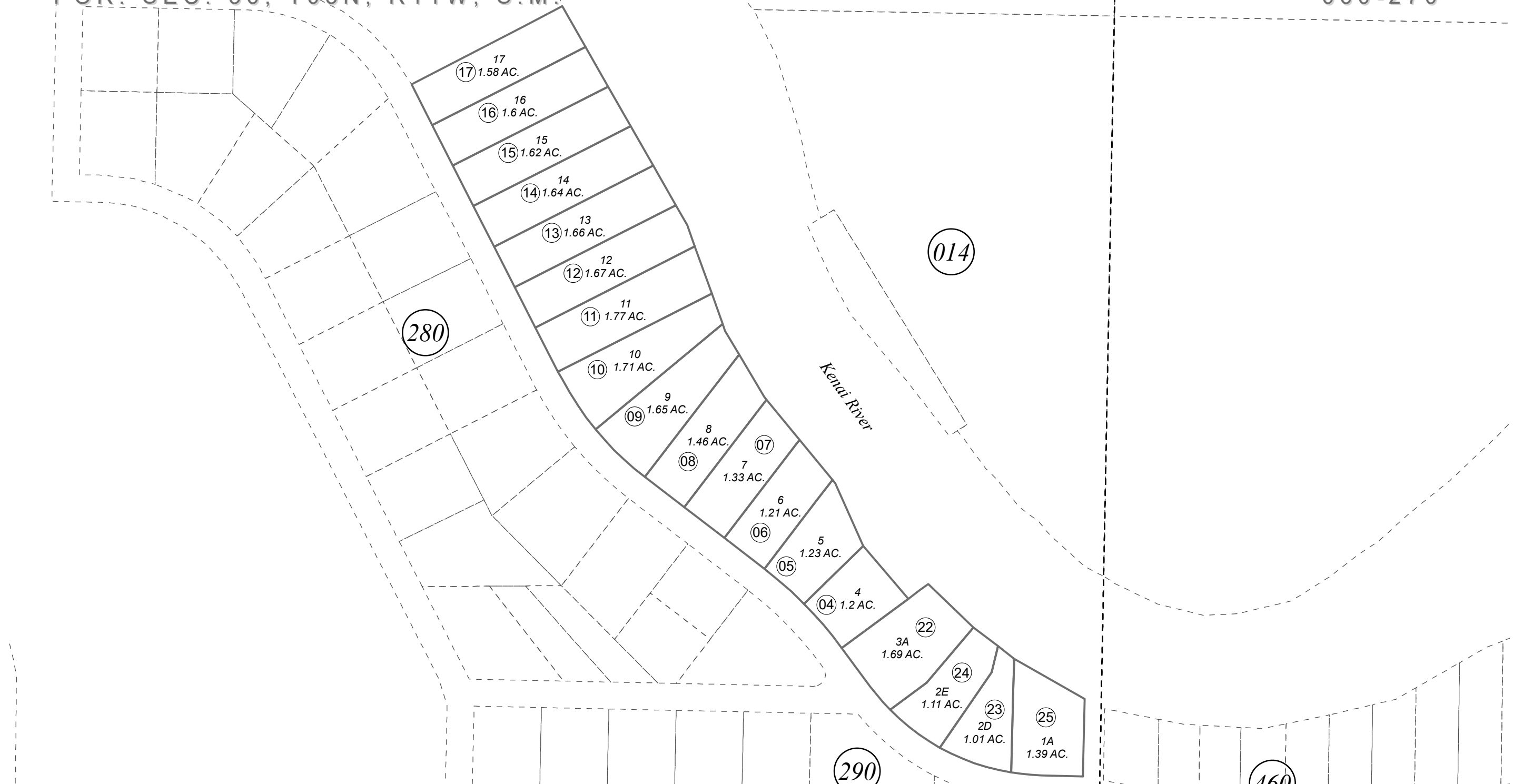


POR. SEC. 36, T05N, R11W, S.M.

060-270



0 100 200 Feet

NOVEMBER 30, 2022

For 2023 assessment roll		
Delete	Add	Revise
	To	
01	25	

Assessor's Map
Kenai Peninsula Borough

SLIKOK CREEK ALASKA SUB KN0001361
 SLIKOK CREEK ALASKA SUB #3 KN0970085
 SLIKOK CREEK ALASKA SUB #4 KN2009017
 SLIKOK CREEK ALASKA SUB 2022 REPLAT KN2022006

This map is prepared for Kenai Peninsula Borough Assessing Dept. use only and is not intended for conveyance nor is it a survey.

Note- Assessor's block Numbers Shown in Ellipses
Assessor's Parcel Numbers Shown in Circles