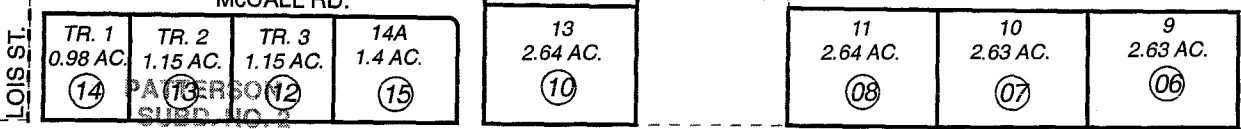
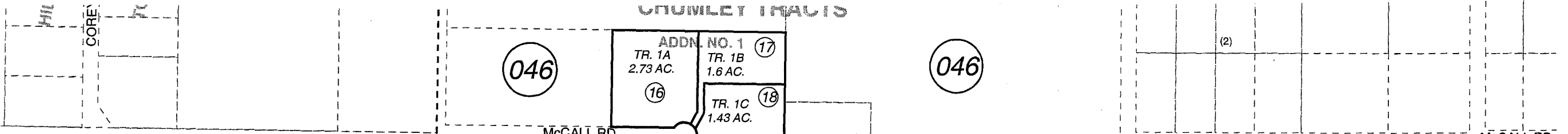


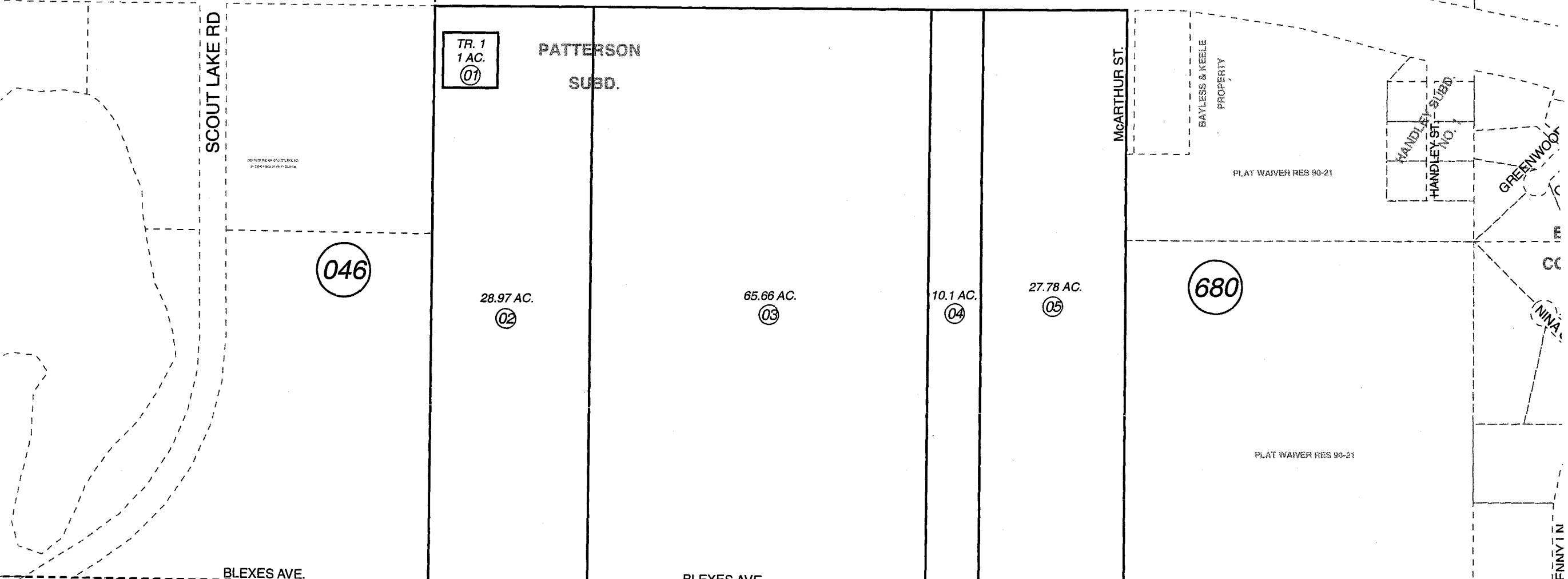
POR. SEC. 11, T05N, R09W, S.M.

063-620

CHUMLEY TRACTS

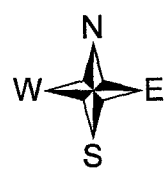


STERLING HWY



NOVEMBER 6, 2006

For 2007 assessment roll		
Delete	Add	Revise
To		
15-18		



Assessor's Map
Kenai Peninsula Borough

820

PATTERSON SUB KN00001682
PATTERSON SUB NO 2 KN0780037
CHUMLEY TRACTS SUB ADDN NO 1 KN2006086

This map is prepared for Kenai Peninsula Borough Assessing Dept. use only and is not intended for conveyance nor is it a survey.
Note- Assessor's block Numbers Shown in Ellipses
Assessor's Parcel Numbers Shown in Circles