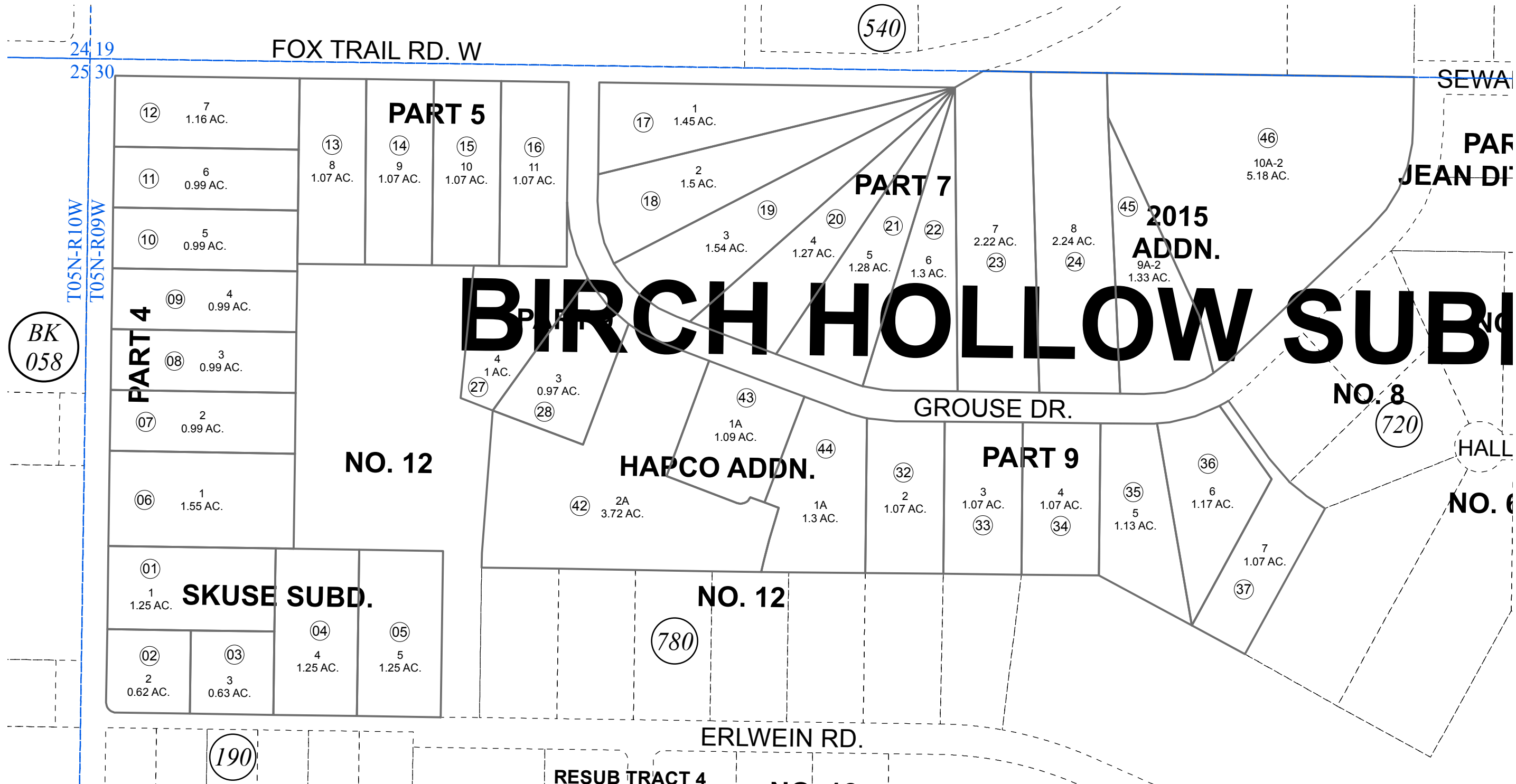


POR. NW1/4 NW1/4 SEC. 30, T05N, R09W, S.M.

063-280



BK
058

T05N-R10W
T05N-R09W

24 19
25 30

FOX TRAIL RD. W

540

SEWA

PAR
JEAN DI'

BIRCH HOLLOW SUBD

NO. 8
720

GROUSE DR.

HALL

NO. 6

NO. 12

HAPCO ADDN.

PART 9

NO. 12

780

ERLWEIN RD.

RESUB TRACT 4

DECEMBER 23, 2015



0 50 100 200 Feet

For 2016 assessment roll		
Delete	Add	Revise
To		
40,41	45,46	

Assessor's Map
Kenai Peninsula Borough

- SKUSE SUB KN0720027
- BIRCH HOLLOW SUB PART 4 KN0810030
- BIRCH HOLLOW SUB PART 5 KN0810124
- BIRCH HOLLOW SUB PART 7 KN0840161
- BIRCH HOLLOW SUB PART 9 KN0850177
- BIRCH HOLLOW SUB HORTON ADDN REPLAT KN0920017
- BIRCH HOLLOW SUBD HAPCO ADDN KN0950074
- BIRCH HOLLOW SUB 2015 ADDN KN2015086

This map is prepared for Kenai Peninsula Borough Assessing Dept. use only and is not intended for conveyance nor is it a survey.

Note- Assessor's block Numbers Shown in Ellipses
Assessor's Parcel Numbers Shown in Circles