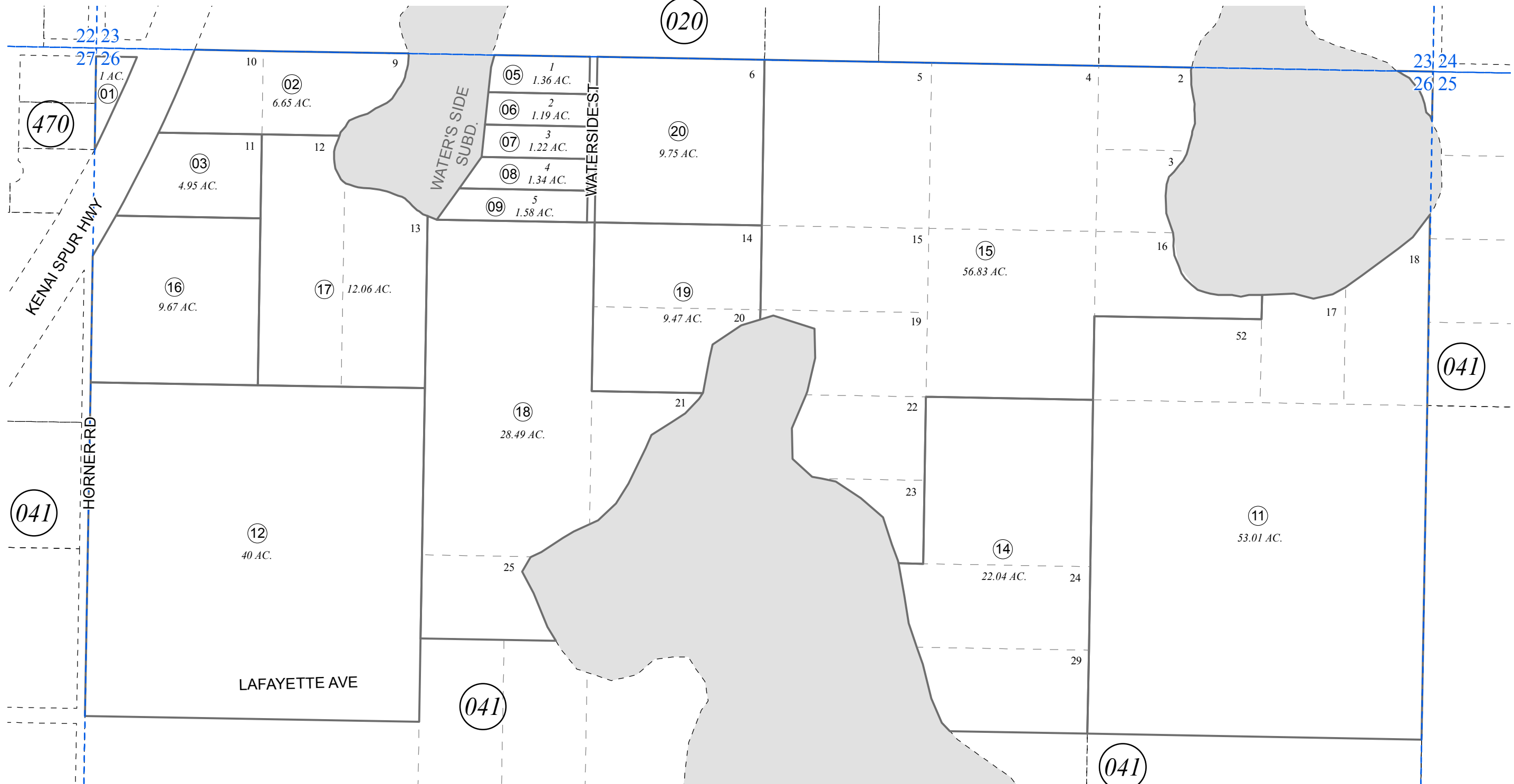


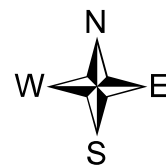
N1/2 SEC. 26, T08N, R11W, S.M.

013-043



AUGUST 20, 2015

For 2016 assessment roll		
Delete	Add	Revise
	To	
13	16-20	



0 100 200 400 Feet

Assessor's Map
Kenai Peninsula Borough

WATER'S SIDE SUB KN0830008

Note- Assessor's block Numbers Shown in Elipses
Assessor's Parcel Numbers Shown in Circles

This map is prepared for Kenai Peninsula Borough Assessing Dept. use only and is not intended for conveyance nor is it a survey.