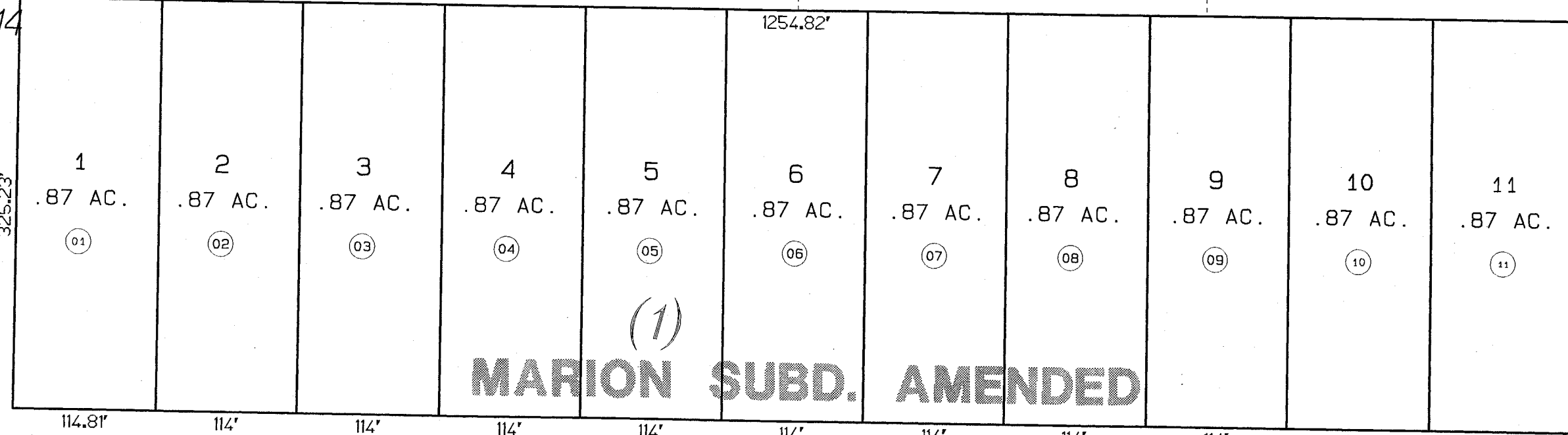


N1/2 NW1/4 SEC. 14, T7N, R12W, SEWARD MERIDIAN

014-080

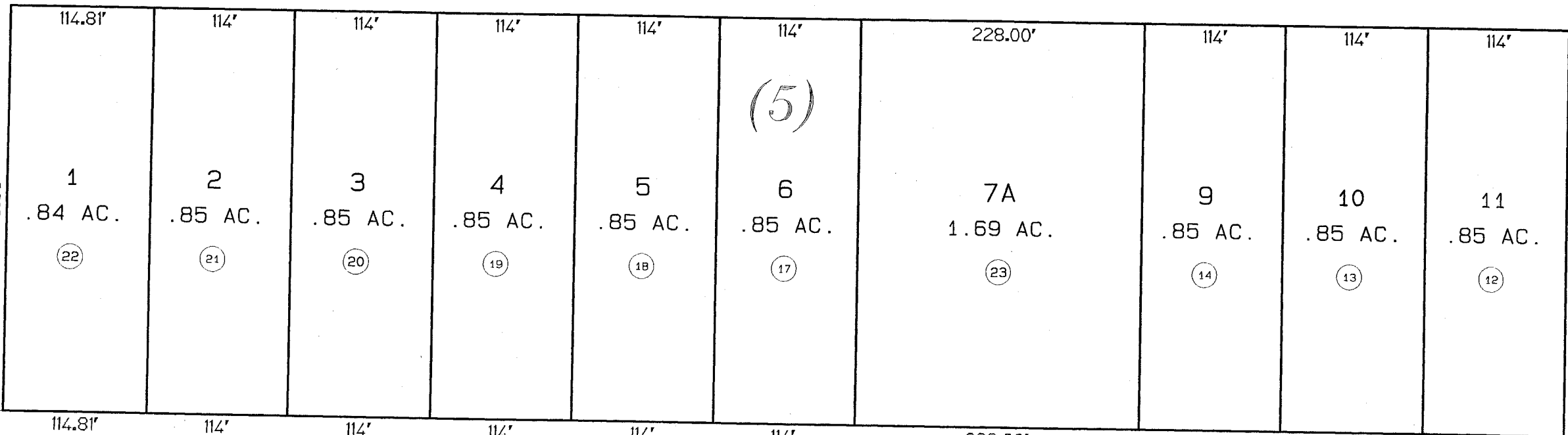
BK
12

10 11
15 14



(1)
MARION SUBD. AMENDED

MARK BLVD.



(5)

**TOWNSEND
ADDN.**

18

DATE: JAN. 3, 1996

FOR 19 96 ASSESSMENT ROLL		
DELETE	ADD	REVISED
TO		
15,16	23	

Assessor's Map
Kenai Peninsula Borough

MARION AMENDED KN740108
MARION TOWNSEND ADDN. KN950062

NOTE - Assessor's Block Numbers Shown In Ellipses
Assessor's Parcel Numbers Shown In Circles

THIS MAP IS PREPARED
FOR KENAI PENINSULA
BOROUGH ASSESSING DEPT.
USE ONLY AND IS NOT
INTENDED FOR ANY
OTHER USE OR REPRESENTATION

PAT CT.

COYE CT.

18

9

