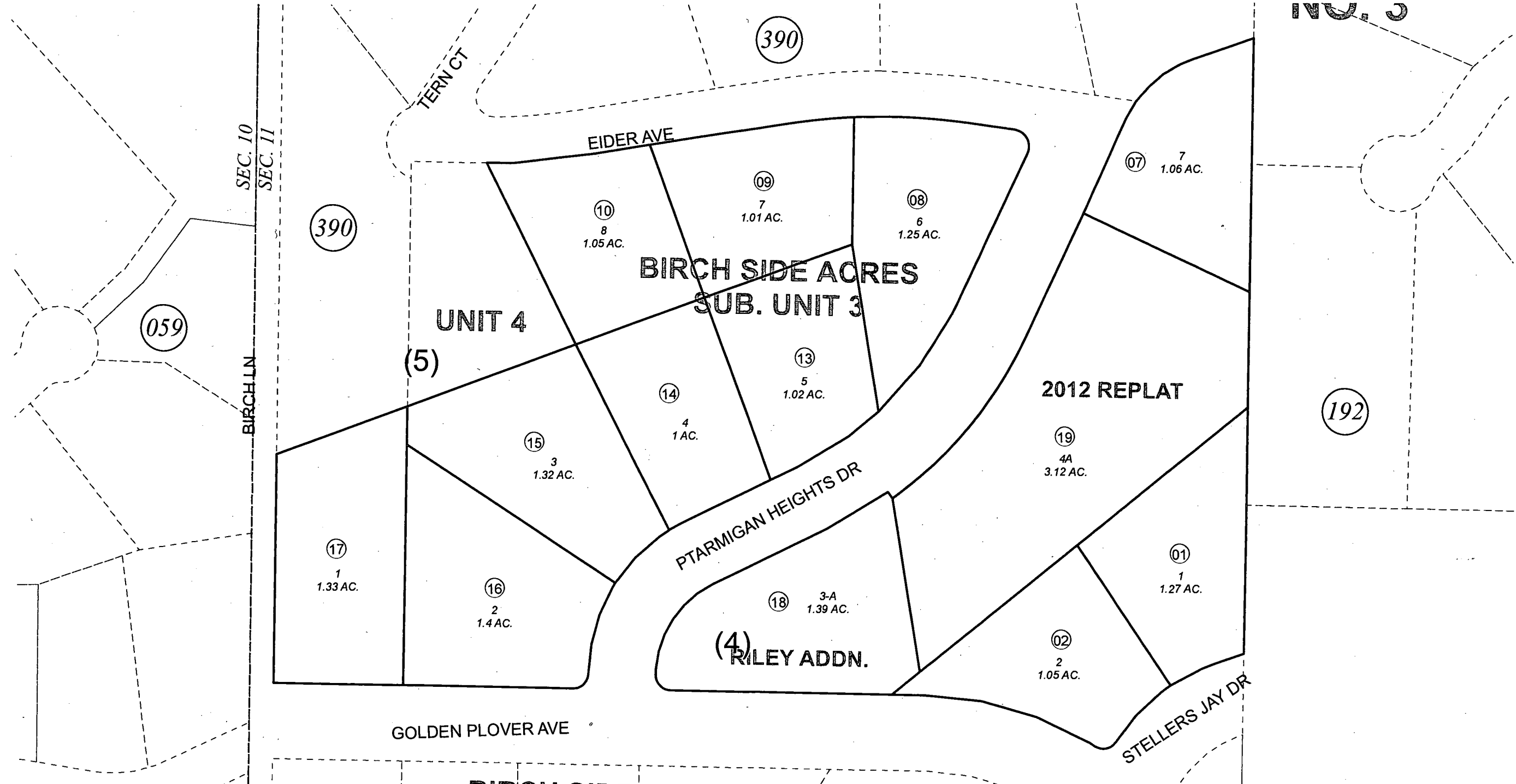


POR. SEC. 11, T06S, R13W, S.M.

174-170
 INV. 3



NOVEMBER 15, 2012

For 2013 assessment roll		
Delete	Add	Revise
	To	
04-06	19	

Assessor's Map
 Kenai Peninsula Borough

BIRCH SIDE ACRES SUB UNIT 3 HM0731019
 BIRCH SIDE ACRES SUB RILEY ADDN HM0990060
 BIRCHSIDE ACRES SUB UNIT 3 2012 REPLAT HM2012044

This map is prepared for Kenai Peninsula Borough Assessing Dept. use only and is not intended for conveyance nor is it a survey.
 Note- Assessor's block Numbers Shown in Ellipses
 Assessor's Parcel Numbers Shown in Circles